

Simulating VLBI observations with VieVS

1 Description

This exercise will give a short introduction to the possibilities of simulating VLBI observations using the Vienna VLBI and Satellite Software (VieVS).

We will simulate our previously created schedules and look at the expected baseline length repeatability.

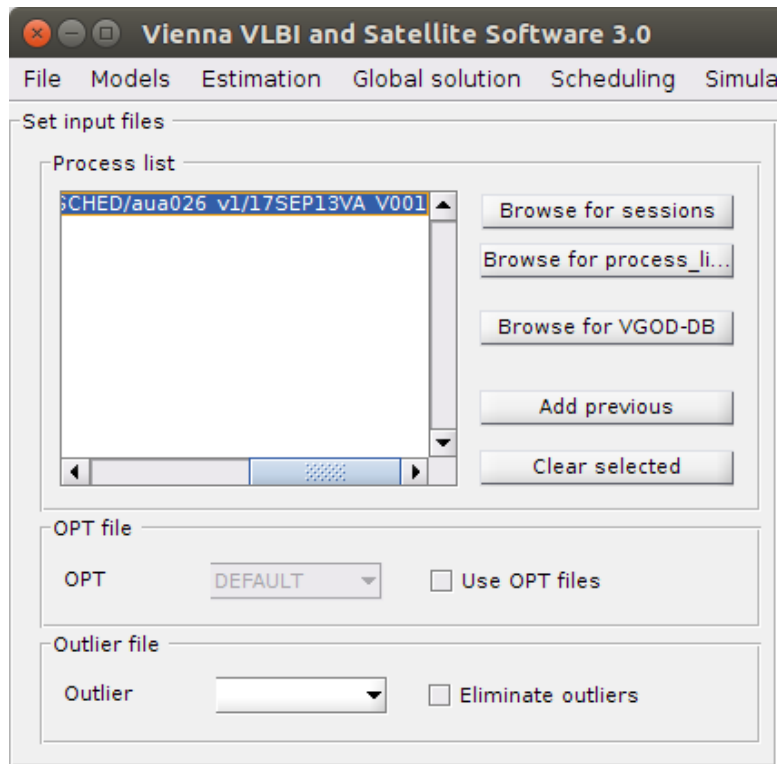
2 Starting VieVS

- start MATLAB
- browse to your VieVS folder **/VieVS/WORK*
- type *views* in the matlab command window

now VieVS should open

3 Select input files

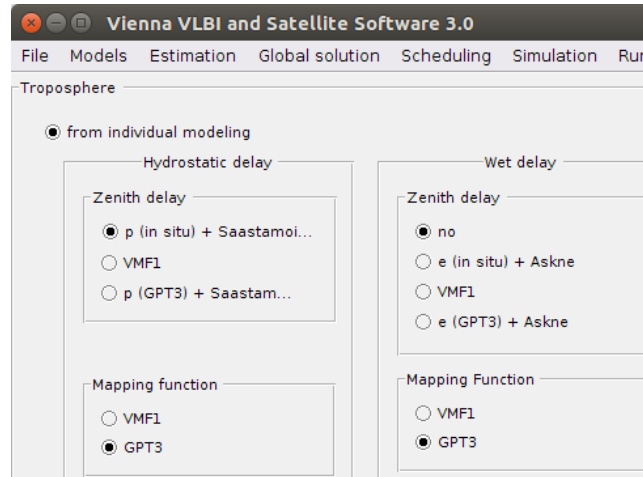
Select the input NGS file in *File/Set input files*. We want to simulate our previously created VLBI schedule. Click *Browse for session* and select the NGS file in *DATA/SCHEDED/*your_folder*/*your_file** (NOTE: you need to browse one folder back after you clicked *Browse for session*).



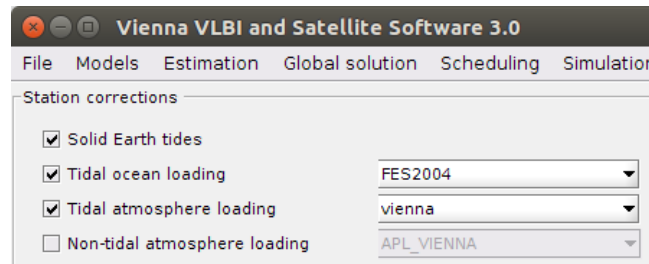
4 Models

Because we want to simulate a schedule for tomorrow we need to use different models than the default ones.

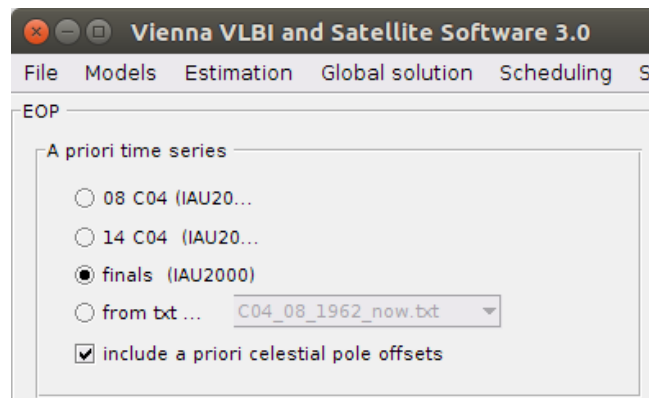
First, we need to change the Mapping function. (VMF3/VMF1 use real weather data, which is not available in advance) Browse to *Models/Troposphere* and select GPT3 for both: hydrostatic and wet delay.



We also need to deselect the non-tidal atmosphere loading effects modelling for the same reasons. Browse to *Models/Station models* and uncheck the *Non-tidal atmosphere loading* checkbox.



Finally we also need to change the EOP time series to the *finals* series. Browse to *Models/EOP* and select *finals (IAU2000)* as your a priori time series.

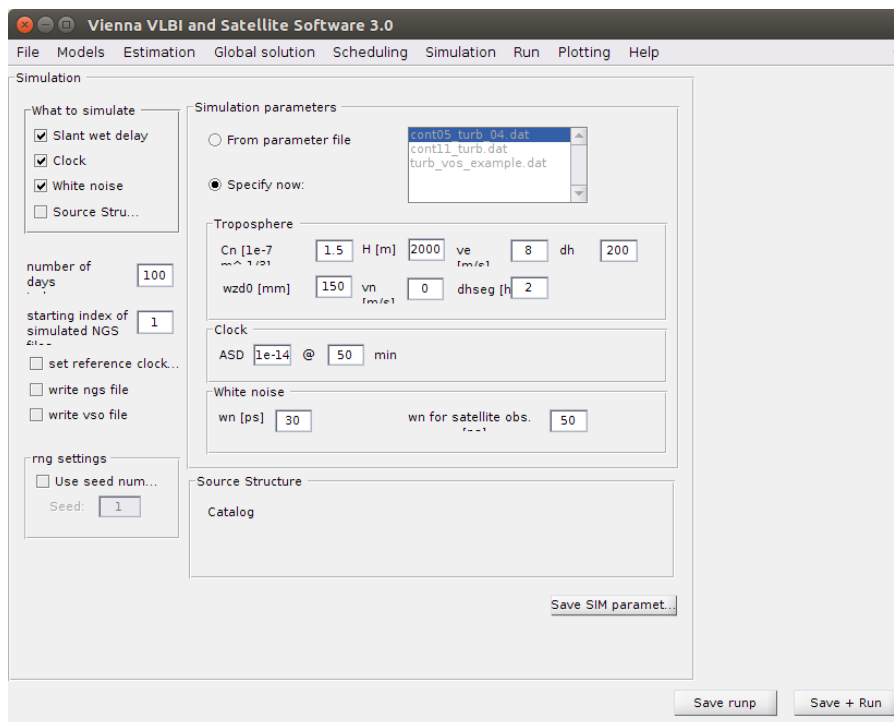


NOTE: in theory, it doesn't really matter which model you use, because the modeled effects are then corrected with the same models again that the effect on $o - c$ is zero.

5 Simulation parameters

Next, browse to *Simulation/Parameters*. We want to use the same parameters for all stations. Therefore select *specify now:*. If you want to use different parameters for each station use the option *From parameter file:* and make sure you have a file stored in *VieVS/DATA/TURB*.

- We want to use a lower troposphere turbulence C_n value of 1.8, and leave the rest of the parameters to their default values.
- Change the *number of days to be simulated* to 20.
- For this exercise we don't need NGS files with our simulated observation, so deselect *write ngs file*.

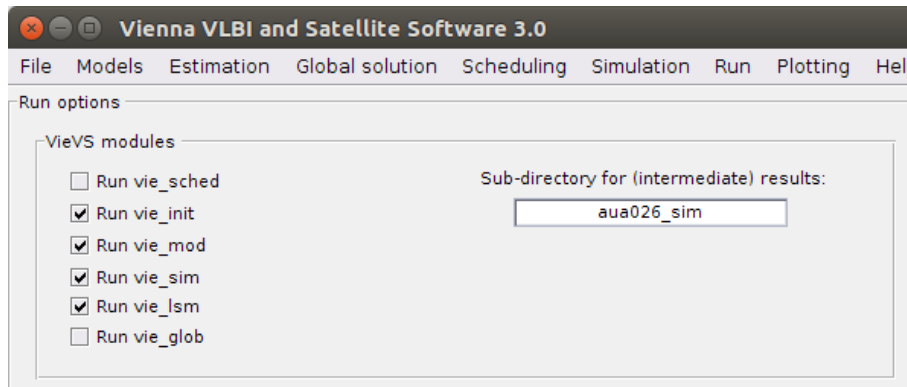


6 Run

Finally, go to the panel *Run/Run options* and select the following VieVS modules:

- VIE_INIT
- VIE_MOD
- VIE_SIM
- VIE_LMS

Also choose a new sub-directory name for (intermediate) results like *R4859.sim* and press *Save + Run*.



If everything worked, you could also do the same for a different schedule. Simply select a other NGS file in *File/Set input file* and choose another sub-directory name in *Run/Run options* and press *Save + Run*.

7 Results

If everything worked you can look at the baseline length repeatability of both simulated scheduling versions. Go to the *Plotting/Session analysis* panel and load your first folder by pressing the *Load* button at the *Folders/Session (black)* panel.

Plot the baseline length repeatability by pressing the *basel. len. rep.* radiobutton.

Afterwards also load your second folder by pressing the *Load* at the *(red,triangle)* panel and check the *Add network/BLR* checkbox.

