

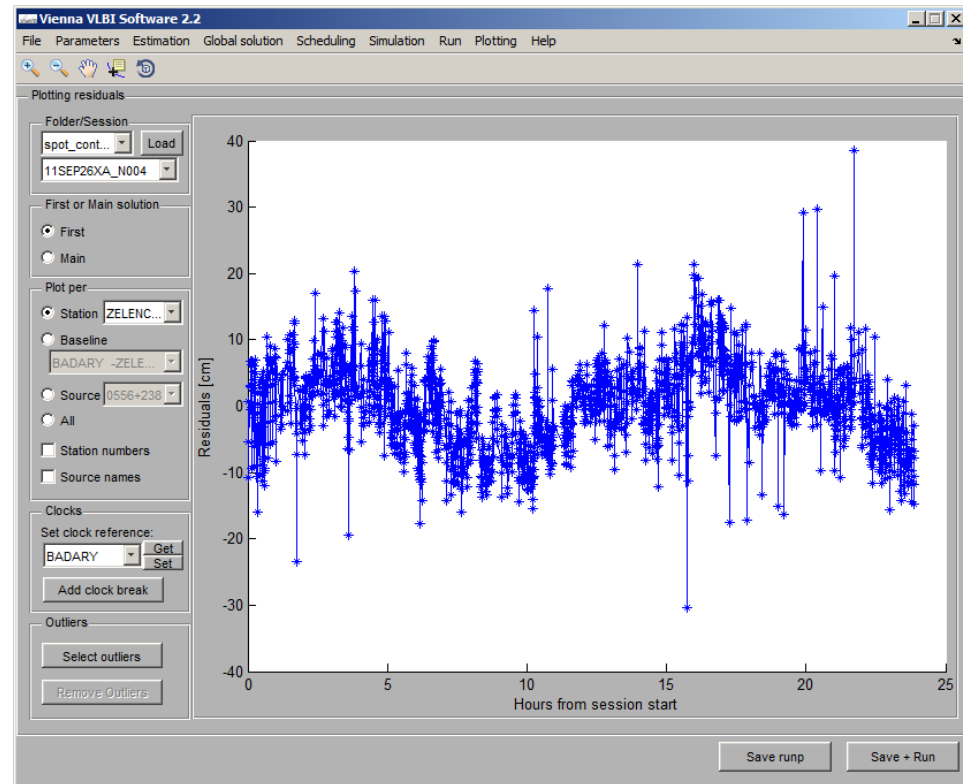
Vie_setup

Matthias Madzak



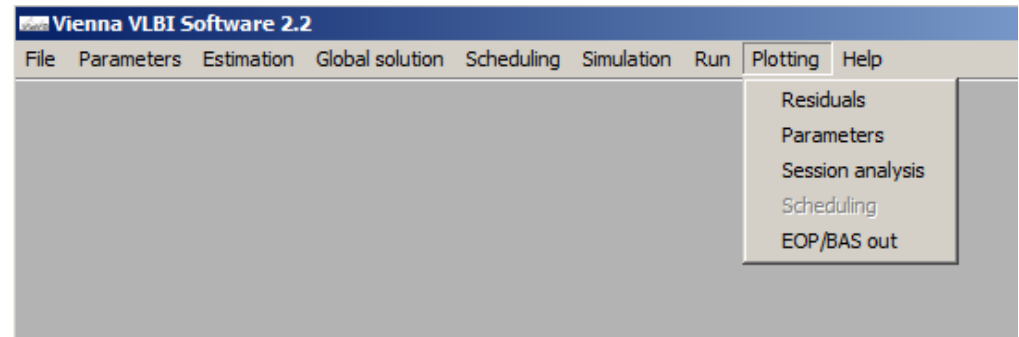
Vie_setup

- Is GUI for Vienna VLBI Software
- Built in Matlab (GUIDE)
- Incorporates all modules
 - Details in separate talks
- Comes with a plotting tool



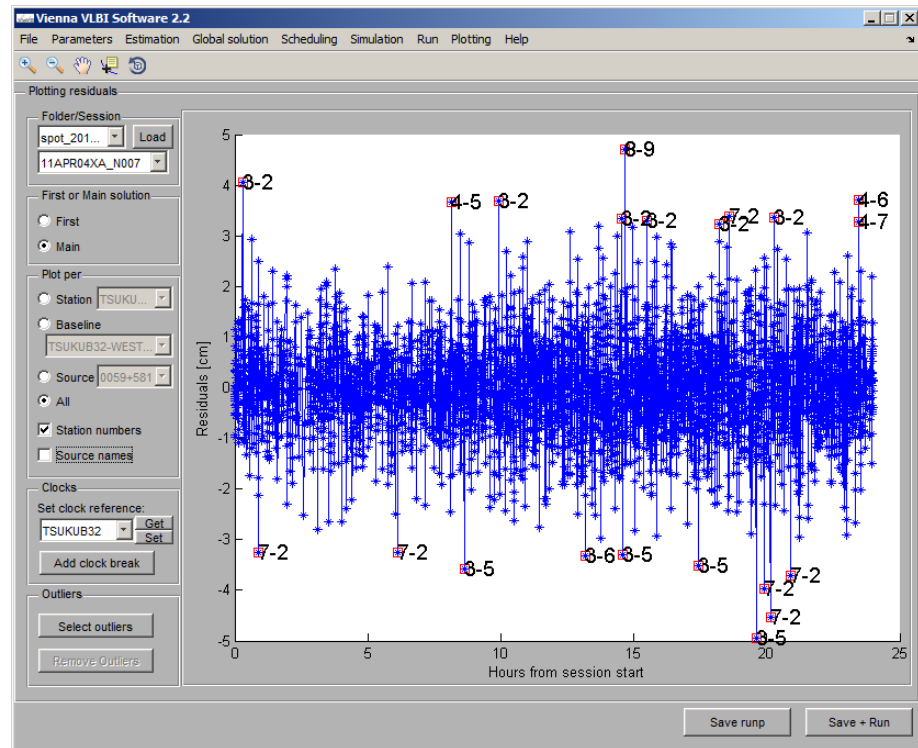
This talk: introducing plotting

- In menu Plotting
 - Residuals
 - Parameters
 - Session information
 - Output to text (EOP, baselines)



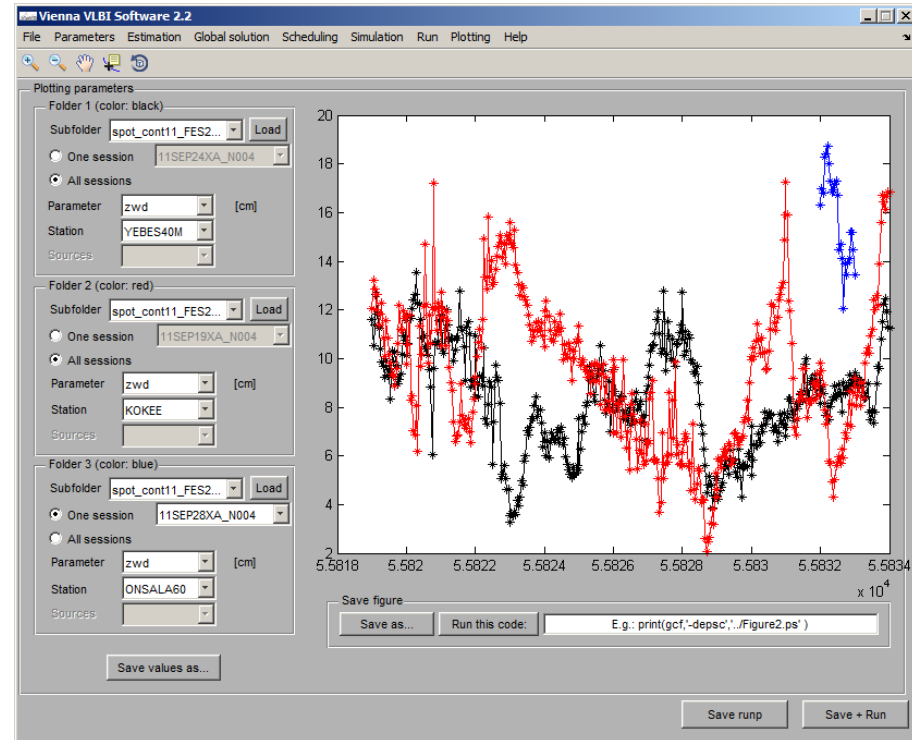
Plot residuals

- “Estimates” – Observations → Check for problems
„A x - l“
- First/Main
 - Only clock+zwd
 - Identify clock breaks
- „Plot per...“
 - Identify problems
- Add clock break (see also later exercises)
- Select outliers
 - Auto detection in est. settings



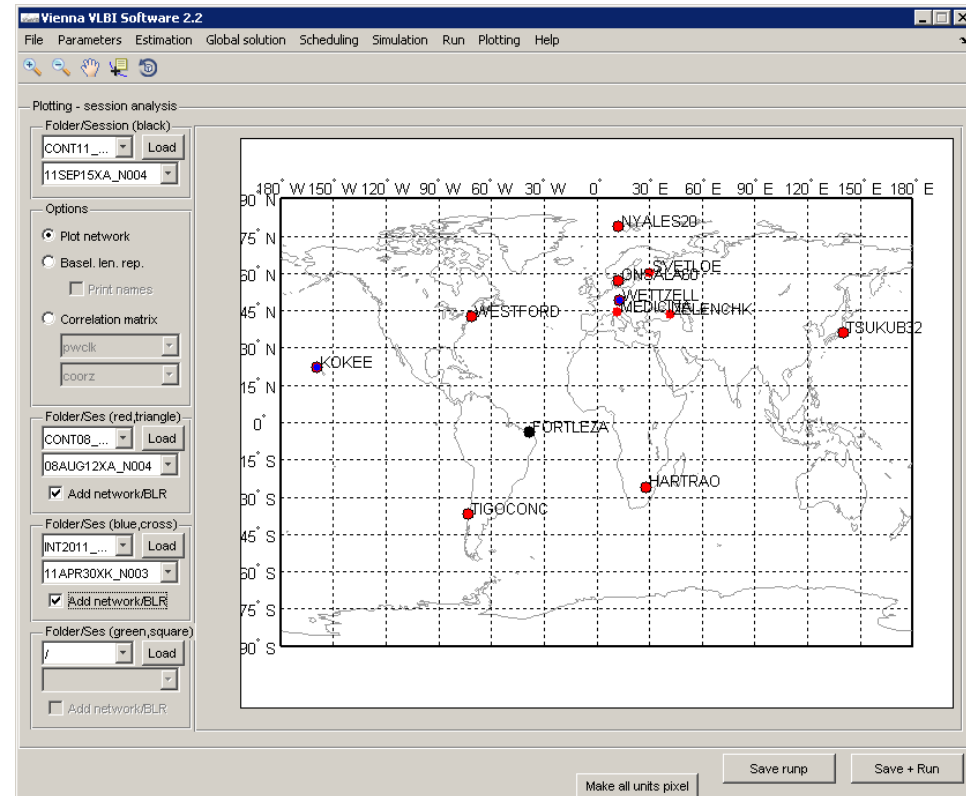
Plot parameters

- One/all session(s) in folder
- Parameters per station
 - clk, zwd, ngr, egr, coor(x,y,z)
- Parameters per session
 - xp, yp, dut1, nutdx, nutdy
- Comparison (up to three) possible
- Save values as text
- Print image
 - E.g. -> .fig -> modify -> .pdf



Plot session information

- Session network*
 - Baseline length repeatabilities*
 - Correlation matrix
- * Up to four sessions



Output to text

- Save estimated EOP or baseline lengths
- Select
 - Sessions (here: CONT11)
 - Subfolder (select provided folder)
 - Output file
- (Intensives/24h: Different epoch treatment)

